

WisconsinVision

OUR VISION PLAN

SERVICE	MEMBERS	RETAIL
COMPREHENSIVE EYE EXAM	\$41.00	\$59.00
FRAME	\$34.00	up to \$79.00
DESIGNER FRAMES	30% OFF RETAIL	FULL PRICE
LENSES:		
SINGLE VISION	\$40.00	\$60.00
LINE BIFOCAL	\$65.00	\$95.00
LINE TRIFOCAL	\$85.00	\$125.00
PROGRESSIVE LENSES:		
BASIC	\$110.00	\$160.00
PREMIUM	\$170.00	\$235.00
ULTRA PREMIUM	\$225.00	\$295.00
ALL OTHER PROGRESSIVE LENSES RECEIVE A 20% DISCOUNT		
PACKAGES:		
SINGLE VISION & FRAME (single vision plastic lenses and \$59 frame)	\$49.00	\$119.00
SINGLE VISION & FRAME (single vision plastic lenses and \$79 to \$99 frame)	\$79.00	\$135.00
PREMIUM PROGRESSIVE LENS PACKAGE (AO Easy plastic lenses and a frame up to \$139)	\$259.00	\$364.00
EYEGLASS LENS OPTIONS:		
HI-INDEX 1.60 (thinner lens)	\$50.00	\$70.00
HI-INDEX 1.67 (ultra thin lens)	\$95.00	\$130.00
POLYCARBONATE (impact resistant)	\$30.00	\$40.00
TRANSITION LENSES (darken and lighten)	\$80.00	\$100.00
POLARIZED SUNGLASS LENSES	\$65.00	\$85.00
TEFLON CLEAR COAT WITH ANTI-REFLECTIVE COATING	\$89.00	\$99.00
ZEISS ANTI-REFLECTIVE COATING	\$75.00	\$79.00
CONTACTS:		
CONTACT LENS PACKAGE (Exam, fitting fee, and 3-month supply of B&L single vision or Cooper Encore premium lenses)	\$99.00	\$153.00

20% DISCOUNTS AVAILABLE ON MOST OTHER PRODUCTS AND SERVICES NOT NOTED IN THE ABOVE PRICE SCHEDULE
Prices valid through August 2016

OR for a
limited time only

- Since 1978 Wisconsin Vision has been endorsed by over 600 labor unions.
- We are very proud to be a union shop optical provider.
- Wisconsin Vision is a full service vision care provider.
- Modern facilities with state-of-the-art equipment and technology.
- Comprehensive eye examinations, including Glaucoma testing.
- Over 1,600 frames to choose from.
- Highly trained professionals, including Doctors of Optometry and friendly, knowledgeable Opticians to assist you in selecting the right eyewear for your individual needs.
- 23 convenient locations.
- Evening and weekend hours to serve you better.

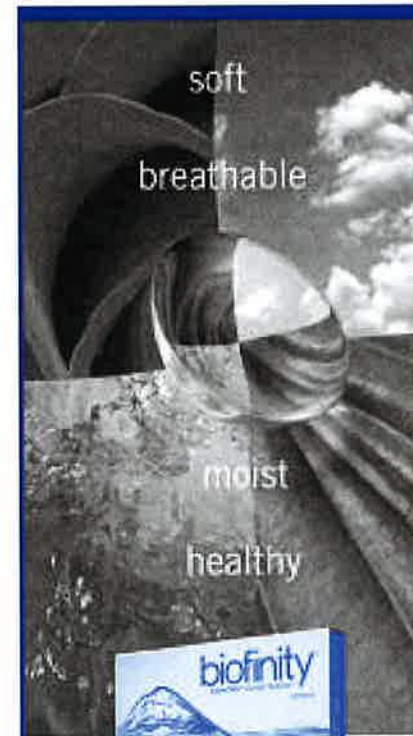


Complete Package Frame and Lenses

Save \$100 When You
Purchase a Designer Frame
with a Minimum Retail Value
of \$169⁰⁰ and Lenses.

Back To
**School
Special**

Offer Not Valid with Other Discounts or Promotions.
Some Restrictions May Apply. Offer Expires 12/31/15



Now There's A Naturally Comfortable Contact Lens.

New Biofinity® contact lenses are made from a soft, breathable material that helps them stay moist and healthy all day long.

CALL US TODAY TO SCHEDULE AN APPOINTMENT FOR A FREE TRIAL PAIR.*

WisconsinVision
YOU WON'T BELIEVE YOUR EYES.™

*DOES NOT INCLUDE EXAM OR FITTING FEES

©2007 CooperVision, Inc. CooperVision and Eye Design, "See Beyond the Ordinary", and Biofinity are registered trademarks of The Cooper Companies, Inc., its subsidiaries or affiliates. MF 10/07-COO-CVS-BF-2646

CooperVision®

SEE BEYOND THE ORDINARY™

Wisconsin Vision

Madison

5505 Odana Road
Madison 608-277-9393

2612 E. Washington Ave.
Madison 608-249-5100

Milwaukee

1920 W. Layton Ave.
Milwaukee 414-325-8600

1401 S. 108th St.
(Hwy. 100 at Greenfield)
West Allis 414-476-0200

7528 W. Burleigh St.
Milwaukee 414-873-9090

8225 S. 27th St.
Franklin 414-761-2269

12876 W. Bluemound Rd.
Elm Grove 262-432-0052

4818 S. 76th St.
Greenfield 414-431-0385

1224 Miller Park Way
Milwaukee 414-383-4250

301 N. Water St.
Milwaukee 414-539-3524

Waukesha

203A East Sunset
Waukesha 262-524-1130



Glendale

5530 N. Port Washington Rd., Unit C
Glendale 414-897-0152

Menomonee Falls

N85 W16033 Appleton Ave.
Menomonee Falls 262-251-1900

Sheboygan

2229 S. Memorial Pl.
(23rd at Kohler Memorial Dr.)
Sheboygan 920-458-9301

Fox River Valley

1510 Koeller Rd.
Oshkosh 920-235-7789

351 N. Casaloma Dr.
Appleton 920-749-1101

459 W. Johnson St.
Fond du Lac 920-922-5990

Grafton

1260 N. Port Washington Rd.
Grafton 262-546-0234

Green Bay

2158 W. Mason St.
Green Bay 920-490-9860

Racine

3905 Douglas Ave.
(Douglas Ave. at 3 Mile Rd.)
Racine 262-639-5360

6035 Durand Ave.
Racine 262-554-8600

Kenosha

Prairie Plaza, 5725 75th St.
Kenosha 262-694-5553

Janesville

2929 Milton Ave.
Janesville 608-756-0728

Wisconsin Vision

Madison Area:		Waukesha:	
West	608-277-9393	Sunset Blvd.	262-524-1130
East	608-249-5100	Silvermail Rd.	262-436-0884
Milwaukee Area:		Menomonee Falls	262-251-1900
Layton Ave.	414-325-8600	Appleton	920-749-1101
West Allis	414-476-0200	Fond du Lac	920-922-5990
W. Burleigh St.	414-873-9090	Glendale	414-897-0152
Franklin	414-761-2269	Grafton	262-546-0234
Bluemound Rd.	262-432-0052	Green Bay	920-490-9860
S. 76th St.	414-431-0385	Janesville	608-756-0728
Pt. Washington Rd.	414-897-0152	Kenosha	262-694-5553
1224 Mill Park Way	414-383-4250	Oshkosh	920-235-7789
301 N. Water St.	414-539-3524	Sheboygan	920-458-9301
Racine:		Heartland Vision Illinois:	
Douglas Ave.	262-639-5360	Peoria, IL	309-681-4679
Durand Ave.	262-544-8600		

PRSR STD
U.S. POSTAGE
PAID
Madison, WI
Permit No. 1884



6602 Normandy Lane
Madison, WI 53719

